

# Preamble

Attention: Bareos is shipped with a default configuration which provides a simple backup scenario for introduction purposes only and a first self-backup, too! For running operations you have to adjust the configuration to your needs and cases of application.

## Installing the linux file daemon

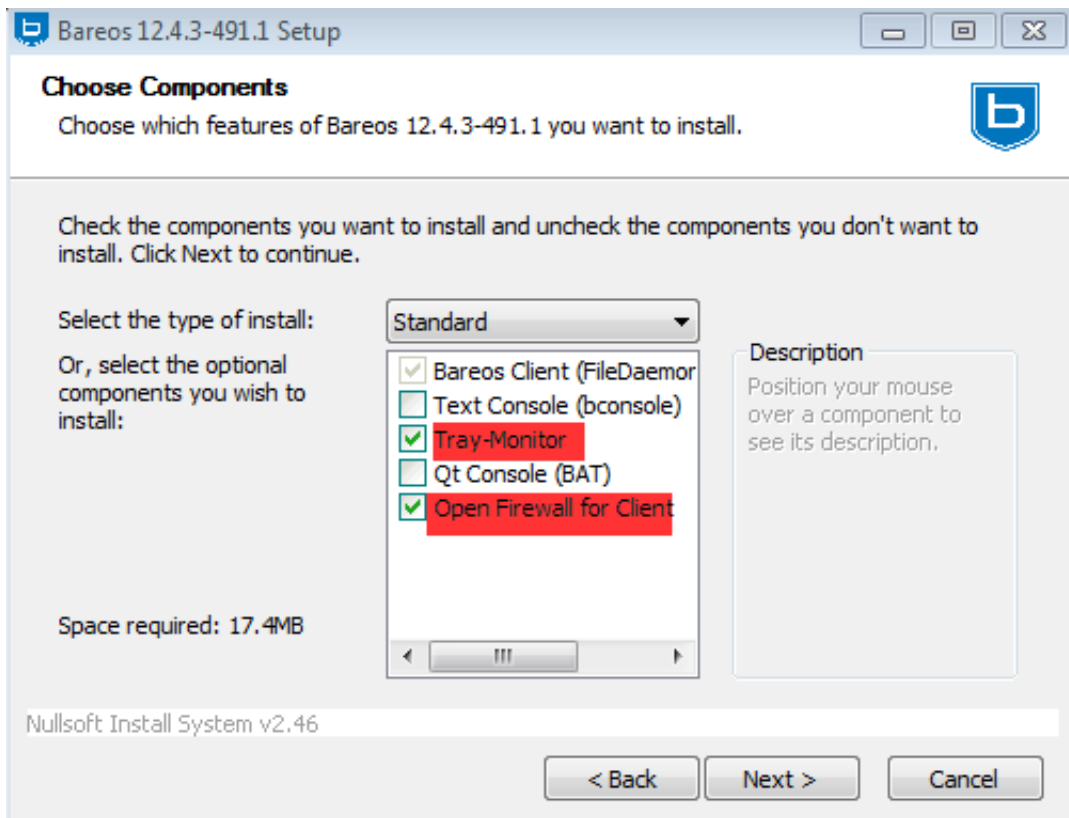
In linux you use the repository of your distribution as it is described in [Quickstart](#) and install the bareos-fd package. After installation of the package from the repository you have to add the correct director into the bareos-fd.conf and restart the bareos-fd:

```
Director {  
    Name = bareos-dir  
    Password = "PASSWORD" # this is the password which you need to use w  
ithin the client resource.  
}
```

## Installing the windows file daemon

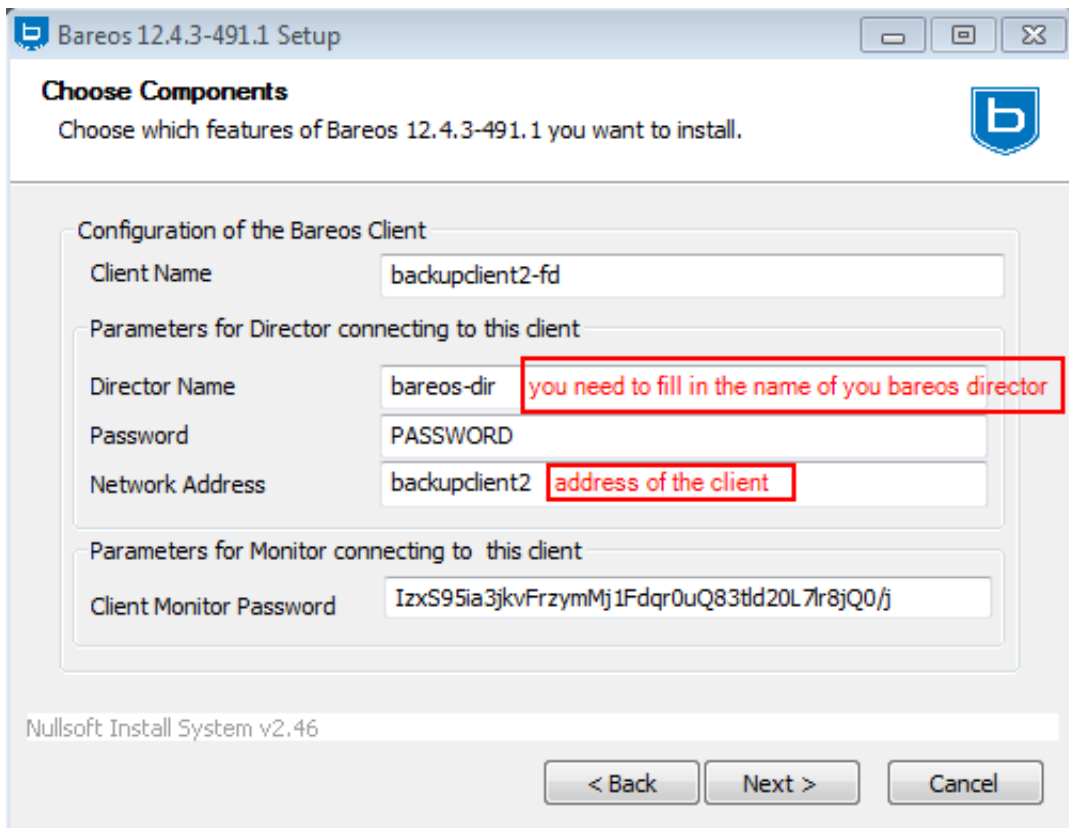
We provide Windows installer packages and [OPSI](#) packages of the bareos-fd for Windows in the package called 'winbareos'. It has been tested on Windows 7 and Windows Server 8, and will probably run on other versions, too.

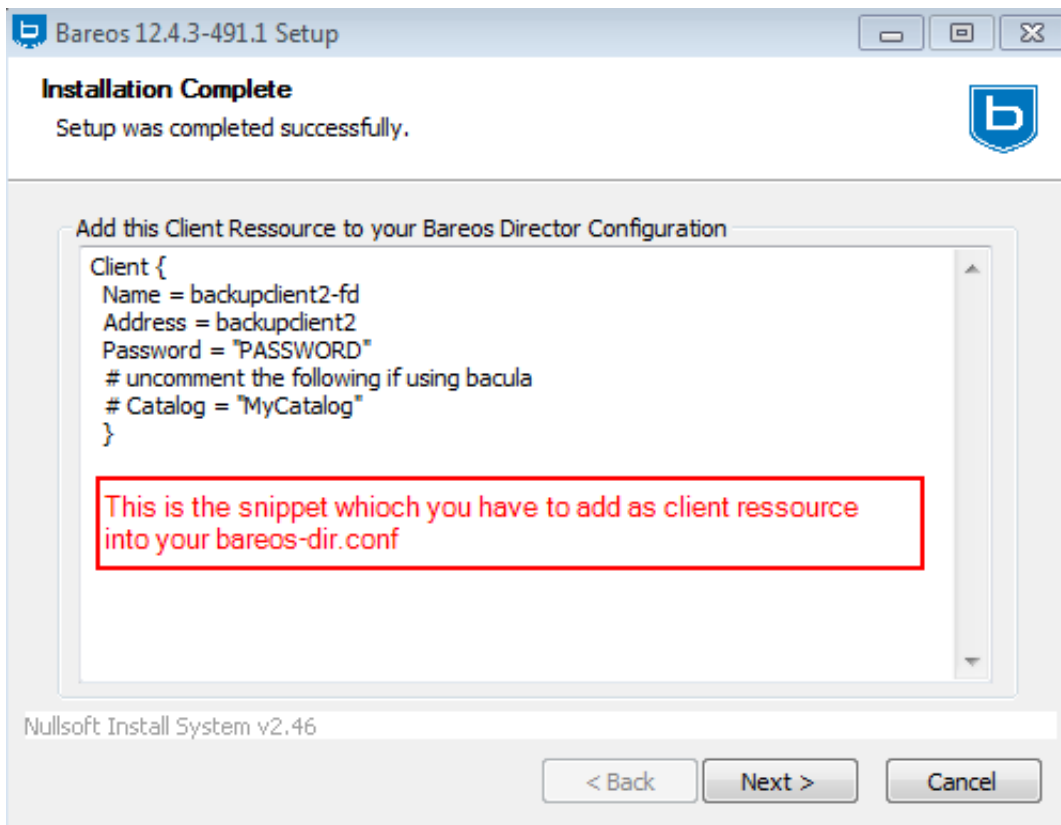
In windows you have to install the 'winbareos' packages provided at <http://download.bareos.org/bareos/release/latest/windows>. Here are the important steps:



You need only the

"Tray System" and the FW opening as additional





## Add a client and the linked job into bareos-dir.conf

You need to add a job resource and a client resource for the client as it is also described in the default bareos-dir.conf and:

```
Job {
  Name = "BackupClient2"
  Client = backupclient2-fd
  JobDefs = "DefaultJob"
}
```

```
Client {
  Name = backupclient2-fd
  Address = backupclient2 # the name has to be resolvable through DNS
  Password = "PASSWORD" # password for FileDaemon which has to
  be the same like the password in the director ressource of the bareos-
  fd.conf on the backup client.
  File Retention = 30 days # 30 days
  Job Retention = 6 months # six months
  AutoPrune = no # Prune expired Jobs/Files
}
```

## First Client Backup (bareos server self backup)

Before we can run a first self-backup of the bareos server, we need to create a new volume on the storage:

### Create a Volume

```
root@barteldan:~# bconsole
Connecting to Director barteldan:9101
1000 OK: barteldan-dir Version: 12.4.3 (15 April 2013)
Enter a period to cancel a command.
*label
Automatically selected Catalog: MyCatalog
Using Catalog "MyCatalog"
Automatically selected Storage: File
Automatically selected Storage: File
Enter new Volume name: file001
Select the Pool (1-3): 2
Connecting to Storage daemon File at barteldan:9103 ...
Sending label command for Volume "file001" Slot 0 ...
3000 OK label. VolBytes=195 Volume="file001" Device="FileStorage" (/va
r/lib/bareos/storage)
Catalog record for Volume "file001", Slot 0 successfully created.
Requesting to mount FileStorage ...
3906 File device "'FileStorage' (/var/lib/bareos/storage)" is always m
ounted.
```

### First Backup

After creating a new volume in the pool "File" we are able to perform the first initial backup of the bareos server.

----This process is identical to running any other backup job from the bconsole----

First choose the job that you want to start manually. Afterwards, modifications can be made. In our case we start the job without modifications.

```
root@barteldan:~# bconsole
Connecting to Director barteldan:9101
1000 OK: barteldan-dir Version: 12.4.3 (15 April 2013)
Enter a period to cancel a command.
*run
Automatically selected Catalog: MyCatalog
```

```
Using Catalog "MyCatalog"
A job name must be specified.
The defined Job resources are:
    1: BackupClient1
    2: BackupCatalog
    3: RestoreFiles
Select Job resource (1-3): 2
Run Backup job
JobName: BackupCatalog
Level: Full
Client: barteldan-fd
Format: Native
FileSet: Catalog
Pool: File (From Job resource)
NextPool: *None* (From unknown source)
Storage: File (From Job resource)
When: 2013-05-13 08:51:52
Priority: 11
OK to run? (yes/mod/no): yes
```

## Further Help

So this should have given you a short overview of how to use the bareos backup server. If you have further questions, you are advised to consult the [how to contribute page](#) to learn how to read and write to the bareos-users mailing list.

For further reading we recommend the How To section, including [How to use Bareos new Features](#) (which is quiet advanced) and the [Bacula Book](#) of course (almost everything said in there is true for Bareos, too. Keep in mind that Bareos config files are located at /etc/bareos and not at /etc/bacula and the programs' names differ in the same way).

Information about commercial help, like subscription, support or consulting can be found on [bareos.com](http://bareos.com).